

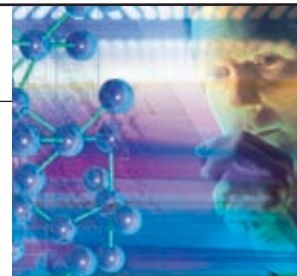
inovapure

Pancreatic Enzymes

Ovoproducts

Pharmaceutical & Healthcare

inovapure inhibits the growth of a wide range of Gram-positive bacteria by effectively rupturing the peptidoglycan layer of the cell wall.



inovapure[™]

inovapure is a standardized preparation of lysozyme, a natural anti-microbial enzyme extracted from chicken egg white. Several mammals, including humans, produce lysozyme, generally in saliva, milk and tears, where it plays an important role in the immune system, protecting against infection. This makes it a logical, safe and natural anti-microbial for use in pharmaceutical applications.

inovapure inhibits the growth of a wide range of Gram-positive bacteria by effectively rupturing the peptidoglycan layer of the cell wall. Research has also shown that it can also have a chitinase-like activity on certain fungi.

APPLICATION

In Asia, where the use of inovapure in over-the-counter products is very common, different products include the treatment of colds, infection, sore throats, sinusitis and athlete's foot.

In the European market, inovapure is marketed as an effective component in throat lozenges. In the United States, this enzyme is used in a range of mouth care products (toothpaste, mouthwash and oral gel) designed for people with dry mouth (Xerostomia). Diseases ranging from diabetes to Sjogren's disease to AIDS can cause dry mouth; it also occurs in people undergoing radiation treatment or taking certain prescription medications.

Considerable research has been done over the past thirty years to identify specific pharmaceutical applications. Potential applications include treatment of topical bacteria and fungi, problematic oral flora, and even viruses. Efficacy has been demonstrated in several areas, and potential uses for this naturally occurring enzyme have been identified through scientific research, including:

- inhibition of the influenza virus;
- inhibition of *streptococcus* spp and other bacteria commonly associated with throat infections;
- treatment of herpes viruses, including *Herpes simplex* and *Herpes zoster*;
- controlling the propagation of the AIDS virus, when combined with another naturally occurring human enzyme, deoxyribonuclease;
- preventing alveolar pyorrhea and gingivitis with a dental cream; and
- treatment of wounds, burns and athlete's foot.

OPTIMAL CONDITIONS

As a physiological enzyme, inovapure will have its maximum rate of lysis under physiological conditions, i.e., a pH of 6.5 and 40°C. However, it is active over a wide pH and temperature range.

BENEFITS / ADVANTAGES

As one of the largest manufacturers and suppliers worldwide of egg white proteins, Neova's advanced extraction and purification processes yield products that are consistently chosen over other competitive products. All extraction and refining is done under cGMP guidelines for active pharmaceutical ingredients (API).

A key benefit associated with using Neova inovapure lies in the full range of services, including both technical and applications support that Neova provides. Neova works with its customers to meet their unique product specifications.

Neova inovapure is produced in three forms: powder, granulate, and liquid. The powder and granulate are pure forms of the lysozyme enzyme. There are no excipients in the product. The liquid inovapure is a solution of lysozyme in water.

Non Warranty: The information contained herein is provided in good faith and, to the best of our knowledge, is true and correct. However, no warranty or guarantee is implied or inferred and the information may be subject to change without further notice. Neova Technologies Inc.'s and Neova Technologies B.V.'s products are sold with the understanding that the purchaser will conduct tests to determine the suitability of these products for their particular use.